

PARK AND PLAY PANČEVO

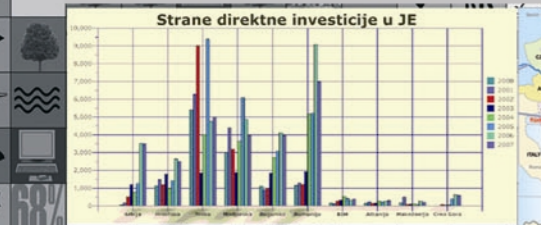


Udaljenost Pančeva od glavnih gradova u regionu i Evropi:

Atina	1297	Bukurešt	647
Minhen	876	Sarajevo	350
Amsterdam	1857	Varšava	1097
Pariz	1847	Sofija	427
Beč	677	Istanbul	1017
Podgorica	450	Ciuh	1417
Brisel	1747	London	2067
Prag	977	Štokholm	2407
Budimpešta	427	Madrid	2687
Rim	1417	Zagreb	420



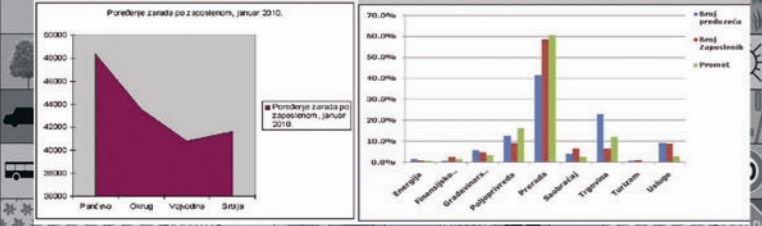
WHY SERBIA
Strategic position for all markets in Europe
Market: 7,5 mil consumers in Serbia, 60 mil consumers in South East European Countries
Free trade agreement with the Russian Federation
Lowest corporate profit tax rate in Europe
National treatment of FDI, favourable taxes and incentives
Competitive labor force
High percentage of English language knowledge in SE and Central E



PANCEVO AS INVESTMENT LOCATION
Profile of the city:
Northern geographic width: 44° 54'
Eastern geographic width: 20° 40'
Above sea level 77m.
Area: 755 km
Agricultural area: 63.820 ha
Population: 127.162
Working age population: 69,85%
Employed: 35.233
Unemployed: 11.357
Average salary per employed: 483 EUR



Average gross salary per employee in year of 2010:
- total: 48.343 din
- in the economic sector: 52.423 din



GREENFIELDS

Planned Greenfield zones are defined upon the General Urbanity Plan as the space where is going to be possible to build economic/industrial facilities for other purposes, which by their influence satisfied the criteria for environment protection.



- Gornjogrski mlin Uptown Mill
- Stara železnička stanica "Pančevo" Old Railway Station "Pančevo" Lokomotiva serije 62-086 Steam locomotive
- Vajfertova pivara The Welfert Brewery
- Vodotoranj Watertower
- Crveni magacin The Red Warehouse
- Svilara Silkworm farm
- Svetionici na Dunavu Lighthouses on Danube bank
- Donjogradski mlin Downtown Mill
- Železnička stanica "Varoš" Railway Station "Varoš"
- "Slavina" punionica piva Beer bottling unit
- Fabrika sijalica "Tesla" Electric bulb factory "Tesla"
- Fabrika stakla Glass factory

PARK PLAY-PANČEVO
The city of Pancevo has a very favourable location on the map of Europe. It is situated in South eastern Europe, in the very south of Vojvodina, on the confluence of Tamiš into Danube, on the edge of the Panonian plain and is domestic economic, cultural, administrative centre of the South Banat region and is one of the most important industrial centres of Serbia.

Developed economy:

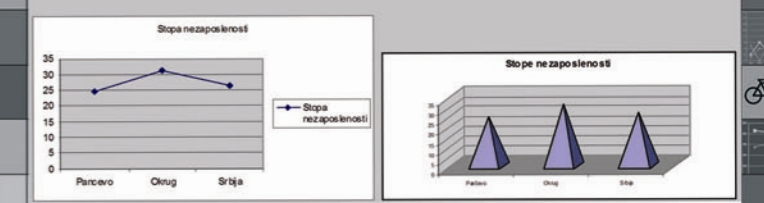
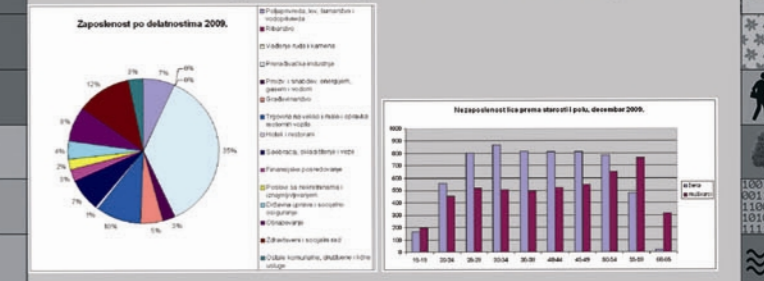
- favourable business climate
- traditional industrial centre
- The largest petrochemical centre in the Balkan
- Big centre of metal industry
- Centre of construction materials
- Centre of textile industry and processed leather
- 5593 enterprises, 1824 entrepreneurs
- Cca 60.000 ha of extremely qualitative agricultural land
- Available and competitive working force
- Attractive location for production of organic food of high quality

Good business tradition:

- The association of craftsmen founded 215 years ago
- The oldest brewery in the Balkans 1722. years
- Fair city since 1905
- The oldest airport in the Balkans
- Decades long tradition of existing industry: chemical industry ("Rafinerija", "Petrohemija", "Azotara"), airline industry, glass factory, furniture industry, and textile industry since the first half of 20th century.

HUMAN RESOURCES:

Pancevo is the city of intellectual capital of the south Banat. There is 20 primary schools and 8 secondary schools (school of economics, school of chemic, school of agriculture, school of mechanics, gymnasium,...) and 3 faculties. Location close to Belgrade city enables high education at 69 different faculties and certain number of private schools with diverse forms of education - which is a great advantage in human resource development.



Usage of foreign languages is present in everyday life and business of many companies and it is a part of the education programs in all schools and institutions of informal education. The most frequently used foreign languages are English, German, Italian, French, Spanish and Russian.

ECONOMY

Struktura preduzeća

Pancevo is the city with developed industrial capacities in dynamic economic branches: industry, agriculture, building industry, building material industry, trade, restaurant and hotel capacities, traffic and connections, financial and other services.
Holders of the economic development are industry and agriculture, while near in the future the accent will be given to the development of tourism.

Key industry branches are:

- Base chemical industry
- Chemical industry
- Refining the crude oil and production of its derivatives
- Metal and electrical industry
- Food industry
- Processing of non metal minerals
- Leather industry, shoe industry and textile industry
- Building material industry
- Final wood product industry

EXISTING FOREIGN INVESTORS

- AUSTRUBAU (Austria)
- BAU HOLDINGS BETEILUNGSG (Austria)
- FLUID UTVA (Slovenia)
- SHOLZ (Germany)
- GAZPROM (Russian Federation)



INCENTIVES FOR INVESTORS

Overview of tax rates:

VAT	18%
Corporate profit tax	10%
Personal income tax	Salaries - 12%, other income - 20%
Annual income tax	10%
Social insurance contributions	Pension and disability insurance - 11% Health insurance - 6,15% Unemployment insurance - 0,75%
Property tax	Progressive rates ranging between 0,4% tp 3% plus a fixed amount

- 10 years tax holiday for large investment
- Accelerated depreciation
- Custom free imports of equipment based on foreign investment
- Free trade agreement with Russian Federation and South-East European countries
- Market facilities with EU and USA
- Special tax benefits in employing people younger than 30 and older than 45 years of age

